

# Semi-Submersible Heave Response Study Using Diffraction Potential Theory with Viscous Damping Correction

C.L Sow <sup>a</sup>, Jaswar Koto, <sup>a,b,\*</sup> and Hassan Abyn, <sup>a</sup>

<sup>a)</sup> Mechanical Engineering, Universiti Teknologi Malaysia

<sup>b)</sup> Ocean and Aerospace Research Institute, Indonesia

\*Corresponding author: jaswar.koto@gmail.com

## Paper History

Received: 5-February-2014

Received in revised form: 10-March-2014

Accepted: 19-March-2014

$\nu$	Damping Ratio
$w_n$	Natural Frequency
$E_i$	Wave Force
$\delta$	Logarithm Decrement
$w_d$	Damped Natural Frequency
$n_i$	Normal Vector

## ABSTRACT

This paper discusses the numerical prediction of the semi-submersible's heave motion. In the previous study, it is observed that the heave motion response predicted by diffraction potential theory is over-estimated in the region where the heave motion is dominated by damping. In this research, viscous damping is included in the calculation to increase the heave damping magnitude in motion equation. The wave force and added mass of semi-submersible is predicted by diffraction potential theory, only the total damping is corrected by sum-up the linear damping from diffraction potential theory with the proposed viscous damping. The heave motion response obtained from the proposed numerical method also compared to the data from the experiment. From the comparison, it can conclude that involved of viscous damping in the calculation will correct a part of heave motion response tendency and reduce the large over-predicted error of heave motion response at the damping dominate.

**KEY WORDS:** *Diffraction Potential, Viscous Damping, Heave Motion, Semi-Submersible.*

## NOMENCLATURE

$\Phi(x, y, z)$	Wave Potential
$A_{ij}$	Added Mass
$B_{ij}$	Linear Damping
$G(P; Q)$	Green Function

## 1.0 INTRODUCTION

This work proposes a damping correction method for linear diffraction theory in order to evaluate the heave motion response of selected offshore floating structure correctly. The linear diffraction theory estimate the wave force on the floating body based on frequency domain and this method can be considered as an efficient method to study the motion of the large size floating structure with acceptable accuracy. This is because previous study also observed that the diffraction effect is significant for the large structure [16]. However, the offshore structure such as semi-submersible, TLP and spar are looked like a combination of several slender bodies as an example, branching for semi-submersible.

In this study, semi-submersible structure is selected as an offshore structure model because this structure is one of the flavours structures used in deep water oil and gas exploration area. To achieve this objective, a programming code was developed based on diffraction potential theory and it is written in visual basic programming language. By comparing the numerical result executed by using diffraction potential theory to experiment result, it is obtained that this theory able to predict the motion response for semi-submersible with acceptable accuracy most of the time, except for heave motion when the wave frequency near to the structure natural frequency [17].

As presented in previous paper, diffraction potential theory is less accurate to predict the structure heave motion response when the wave frequency closer to structure natural frequency. At this situation, the heave response calculated by the diffraction

potential theory will be overshooting to infinity compare to experiment result due to low damping executed by the theory. However, the diffraction potential theory still able to catch the heave response accurately other than damping dominate region [17].

In order to correct the over-predicting phenomenon made by the diffraction potential theory, this research was trying to increase the damping coefficient by adding viscous damping into the motion equation. From that study, the viscous damping is treated as extra matrix and can be added into the motion equation separately. This addition viscous damping was estimated based on the equation proposed by S. Nallayarasu and P. Siva Prasad in their published paper [19].

Accuracy of this modification solution was also checked with the previous semi-submersible experiment result which carried out at towing tank belongs to University Teknologi Malaysia [12, 18]. The experiment is conducted in head sea condition and slack mooring condition for wavelength from 1 meter to 9 meters. The comparison obtained that by adding the extra viscous damping into the motion equation, it can reduce error on the significant over-predicting of heave motion at the situation when wave frequency near to the semi-submersible natural frequency. This also caused the predicted motion response tendency is closed to the experimental result compared to executed result by diffraction potential theory alone. Besides, this paper will discuss the proposed viscous damping equation in the beginning and then the effect addition viscous damping change the motion equation. The difference of heave response results obtained from diffraction potential theory with the existing of viscous damping and without viscous damping is also discussed here.

## 2.0 LITERATURE REVIEW

Hess and Smith, Van Oortmerssen and Loken studied on non-lifting potential flow calculation about arbitrary 3D objects [1, 2, 3]. They utilized a source density distribution on the surface of the structure and solved for distribution necessary to make the normal component of fluid velocity zero on the boundary. Plane quadrilateral source elements were used to approximate the structure surface, and the integral equation for the source density is replaced by a set of linear algebraic equations for the values of the source density on the quadrilateral elements. By solving this set of equations, the flow velocity both on and off the surface was calculated. Besides, Wu et al. also studied on the motion of a moored semi-submersible in regular waves and wave induced internal forces numerically and experimentally [4]. In their mathematical formulation, the moored semi-submersible was modelled as an externally constrained floating body in waves, and derived the linearized equation of motion.

Comparison between the capability of potential theory and viscous fluid theory to predict the fluid characteristic in the narrow gaps between the floating bodies was studied by Lin Lu et al. Their simulation result showed that the potential theory over predicted the fluid resonance amplitude but it can correct by modifying the theory with included artificial damping term,  $\mu=0.4-0.5$  [18].

Yilmaz and Incecik analyzed the excessive motion of moored semi-submersible [5]. They developed and employed two

different time domain techniques due to mooring stiffness, viscous drag forces and damping. In the first technique, first-order wave forces acting on structure which considered as a solitary excitation forces and evaluated according Morison equation. In second technique, they used mean drift forces to calculate slowly varying wave forces and simulate for slow varying and steady motions. Söylemez developed a technique to predict damaged semi-submersible motion under wind, current and wave [6]. He used Newton's second law for approaching equation of motion and developed numerical technique of nonlinear equations for intact and damaged condition in time domain.

Clauss et al. analyzed the sea-keeping behavior of a semi-submersible in rough waves in the North Sea numerically and experimentally [7]. They used panel method TiMIT (Time-domain investigations, developed at the Massachusetts Institute of Technology) for wave/structure interactions in time domain. The theory behind TiMIT is strictly linear and thus applicable for moderate sea condition only.

An important requirement for a unit with drilling capabilities is the low level of motions in the vertical plane motions induced by heave, roll and pitch. Matos et al. were investigated second-order resonant of a deep-draft semi-submersible heave, roll and pitch motions numerically and experimentally [8]. One of the manners to improve the hydrodynamic behavior of a semi-submersible is to increase the draft. The low frequency forces computation has been performed in the frequency domain by WAMIT a commercial Boundary Element Method (BEM) code. They generated different number of mesh on the structure and calculated pitch forces.

Due to the complexity of actual structures' hull form, S. Nallayarasu and P. Siva Prasad were used experimental and numerical software (ANSYS AQWA) to study the hydrodynamic response of an offshore spar structure which linked to semi-submersible under regular waves. From both the experimental and numerical result, it is obtained that the response of the spar is reduced after linked to semi-submersible due to the interaction of radiation wave generated by both the structures and the motion of spar may be reduced by semi-submersible. However, the research also obtained that the motion response for unmoored semi-submersible is increased when linked to spar [19].

Wackers et al. was reviewed the surface discretisation methods for CFD application with different code [9]. Besides, simulation of fluid flow Characteristic around Rounded-Shape FPSO was also conducted by A. Efi et al. using RANs Method [10]. Jaswar et al. were also developed integrated CFD simulation software to analyze hull performance of VLCC tanker. The integrated CFD simulation tool was developed based on potential theory and able to simulate wave profile, wave resistance and pressure distribution around ship hull [11].

In addition, few experiment tests were carried out to obtain the motion response of semi-submersible. A model test related to interaction between semi-submersible and TLP was carried out by Hassan Abyn et al. [12]. In continue Hassan Abyn et al. also tried to simulate the motion of semi-submersible by using HydroSTAR and then analyse the effect of meshing number to the accuracy of execution result and execution time [13]. Besides, C. L. Siow et al. also make a comparison on the motion of semi-submersible when it alone to interaction condition by experimental approach [14]. Besides that, K.U. Tiau (2012) was simulating the motion of mobile floating harbour which has similar hull form as semi-

submersible by using Morison Equation [15].

### 3.0 MATHEMATICAL MODEL

#### 3.1 Diffraction Potential

In this study, diffraction potential theory was used to obtain the wave force act on the semi-submersible structure, added mass and damping for all six directions of motions. The regular wave acting on floating bodies can be described by velocity potential. The velocity potential normally written in respective to the flow direction and time as below:

$$\Phi(x, y, z) = \text{Re}[\phi(x, y, z)e^{i\omega t}] \quad (1)$$

$$\phi(x, y, z) = \frac{g\zeta_a}{i\omega} \{\phi_0(x, y, z) + \phi_7(x, y, z)\} + \sum_{j=1}^6 i\omega X_j \phi_j(x, y, z) \quad (2)$$

where;  $g$  is gravity acceleration,  $\zeta_a$  is incident wave amplitude,  $X_j$  is motions amplitude,  $\phi_0$  is incident wave potential,  $\phi_7$  is scattering wave potential,  $\phi_j$  is radiation wave potential due to motions and  $j$  is direction of motion.

From the above equation, it is shown that total wave potential in the system is contributed by the potential of the incident wave, scattering wave and radiation wave. In addition, the phase and amplitude for both the incident wave and scattering wave is assumed to be the same. However, radiation wave potentials are affected by each type of motion of floating body inside system, where the total potential for radiation wave for the body is the summation of the radiation wave generates by each type of body motion such as roll, pitch, yaw, surge, sway and heave.

The diffraction wave potential  $\phi^{(d)}$  must be satisfied with boundary conditions as below:

$$\nabla^2 \phi^{(d)} = 0 \quad \text{for } 0 \leq z \leq h \quad (3)$$

$$\frac{\partial \phi^{(d)}}{\partial z} + k\phi^{(d)} = 0 \quad (k = \frac{\omega^2}{g}) \quad (4)$$

$$\frac{\partial \phi^{(d)}}{\partial z} = 0 \quad \text{at } z = h \quad (5)$$

$$\phi^{(d)} \sim \frac{1}{\sqrt{r}} e^{-ik_0 r} \text{ should be } 0 \text{ if } r \rightarrow \infty \quad (6)$$

$$\frac{\partial \phi^{(d)}}{\partial n} = -\frac{\partial \phi_0}{\partial n} \text{ on the body boundary} \quad (7)$$

#### 3.2 Wave Potential

By considering the wave potential only affected by structure's surface,  $S_H$ , the wave potential at any point can be presented by following equation:

$$\phi(P) = \iint_{S_H} \left\{ \frac{\partial \phi(Q)}{\partial n_Q} G(P; Q) - \phi(Q) \frac{\partial G(P; Q)}{\partial n_Q} \right\} dS(Q) \quad (8)$$

where  $P = (x, y, z)$  represents fluid flow pointed at any coordinate and  $Q = (\xi, \eta, \zeta)$  represent any coordinate,  $(x, y, z)$  on structure surface,  $S_H$ . The green function can be applied here to estimate

the strength of the wave flow potential. The green function in eq. (8) can be summarized as follow:

$$G(P; Q) = -\frac{1}{4\pi\sqrt{(x-\xi)^2 + (y-\eta)^2 + (z-\zeta)^2} + H(x-\xi, y-\eta, z+\zeta)} \quad (9)$$

where;  $H(x-\xi, y-\eta, z+\zeta)$  in eq. (9) represent the effect of free surface and can be solved by second kind of Bessel function.

#### 3.3 Wave Force, Added Mass and Damping

The wave force or moment acts on the structure to cause the motions of structure can be obtained by integral the diffraction wave potential along the structure surface.

$$E_i = -\iint_{S_H} \phi_D(x, y, z) n_i dS \quad (10)$$

where;  $\phi_D$  is diffraction potential,  $\phi_D = \phi_0 + \phi_7$

Also, the added mass,  $A_{ij}$  and damping,  $B_{ij}$  for each motion can be obtained by integral the radiation wave due to each motion along the structure surface.

$$A_{ij} = -\rho \iint_{S_H} \text{Re}[\phi_j(x, y, z)] n_i dS \quad (11)$$

$$B_{ij} = -\rho\omega \iint_{S_H} \text{Im}[\phi_j(x, y, z)] n_i dS \quad (12)$$

$n_i$  in eq. (10) to eq. (12) is the normal vector for each direction of motion,  $i = 1 \sim 6$  represent the direction of motion and  $j = 1 \sim 6$  represent the six type of motions

#### 3.4 Viscous Damping

The modified viscous damping from the equation provided by S. Nallayarasu and P. Siva Prasad [19] is shown as follows expression:

$$b_v = \nu [(M + A_{33})\omega_n] C \quad (13)$$

Where  $b$  is heave viscous damping of the floating structure,  $\nu$  is damping ratio for heave,  $M$  is the mass of the floating structure,  $A_{33}$  is heave added mass of floating structure and it is calculated from diffraction potential theory and  $\omega_n$  is heave natural frequency and  $C$  is the constant for the viscous damping.

The damping ratio,  $\nu$  and heave natural frequency,  $\omega$  at the equation (13) can be found from heave decay experiment. Based on the result obtained from heave decay experiment, the logarithmic decrement method which defines the natural log of the amplitude of any two peaks can be used to find the damping ratio of an under-damped system. The equation for the logarithmic decrement,  $\delta$  as follows

$$\delta = \frac{1}{n} \ln \left( \frac{x_0}{x_n} \right) \quad (14)$$

where  $x_0$  is the first peak amplitude and  $x_n$  is the  $n$ -th peak amplitude. After the logarithmic decrement,  $\delta$  found, the damping ratio  $\nu$  can be found from the following equation:

$$\nu = \frac{\delta}{\sqrt{\delta^2 - 4\pi^2}} \quad (15)$$

Besides, the heave decay experiment also can be used to obtain the damped natural frequency,  $w_d$  and heave natural frequency,  $w_n$  by following equation:

$$w_d = \frac{2\pi}{T} \quad (16)$$

$$w_n = \frac{w_d}{\sqrt{1-\zeta^2}} \quad (17)$$

where the variable  $T$  is period of heave oscillation motion or time required for two continue successive amplitude peaks.

By insert the data obtained from heave decay experiment into equation (13) the heave viscous damping will able to calculate and insert into the motion equation follow:

$$(M + A_{33})\ddot{X}_z + (B_{33} + b_v)\dot{X}_z + cX = F \quad (18)$$

where the  $M$  is structure mass,  $A_{33}$  is heave added mass,  $B_{33}$  is linear damping from diffraction potential theory,  $b_v$  is the viscous damping defined at equation (13),  $c$  is the heave restoring force, and  $F$  is the wave force contributed to heave motion.

### 3.0 MODEL PARTICULAR

As mentioned, the semi-submersible model was selected as the test model in this study. This Semi-submersible model was constructed based on GVA 4000. The model is constructed from four circular columns connected to two pontoons and two braces. Two pieces of plywood are fastened to the top of the Semi-submersible to act as two decks to mount the test instruments. The model was constructed from wood following the scale of 1:70 (Table 1).

Upon the model complete constructed, few tests were carried out to obtain the model particulars. Inclining test, swing frame test, oscillating test, decay test and bifilar test were carried out to identify the hydrostatic particular for the semi-submersible. The dimension and measured data for the model was summarized as in table 1.

Table 1 Principal particular of the Structures.

Length	0.954 m
Width	0.835 m
Draft	0.239 m
Displacement	0.043501 m <sup>3</sup>
Water Plan Area	0.108082 m <sup>2</sup>
Number of Columns	4
Pontoon length	0.954 m
Pontoon depth	0.09 m
Pontoon width	0.19 m
Pontoons centerline separation	0.645 m
Columns longitudinal spacing (centre)	0.651143 m
Column diameter	0.151286 m
GM <sub>T</sub>	0.041 m
GM <sub>L</sub>	0.058 m
K <sub>XX</sub>	0.452 m
K <sub>YY</sub>	0.385 m

K <sub>ZZ</sub>	0.5 m
-----------------	-------

### 4.0 MESHING FOR SEMI-SUBMERSIBLE

In this study, the numerical method applies to executing the motion response of semi-submersible will only estimate the wave force acting on the surface of the port side structure of semi-submersible. After that, the total wave force for the semi-submersible is double before it fixed into the motion equation.

The selected semi-submersible model in this study is constructed based on GVA 4000 type. Total panels used in the execution are 272 where 25 panels on each column and 222 panels on pontoon surface. The example meshing constructed by this numerical method for the semi-submersible model is shown in figure 1.

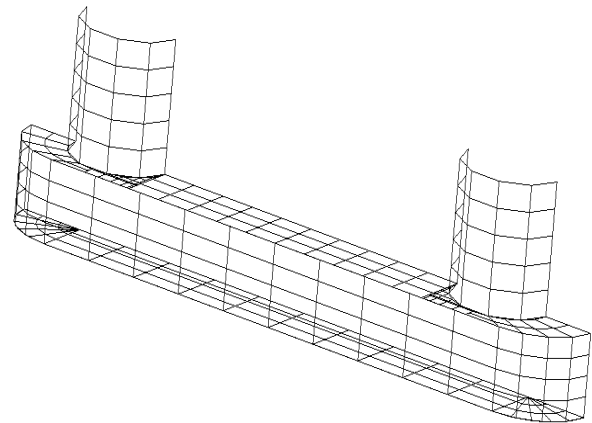


Figure 1: Meshing for semi-submersible model

### 5.0 RESULT

#### 5.1 Heave Decay Experiment

The heave decay experiment was carried out to collect the required data, such as damping ratio and natural heave frequency to able the programming to execute the heave viscous damping. This decay experiment was carried out by displacing the model in the heave directions or along the heave axes, releasing and recording the displacement time histories. The tests are repeated when necessary to obtain reliable results. The data collected from decay experiment after that was processed to obtain the required information for the execution of heave viscous damping follow the discussion in part 3.4. From the calculation, it is obtained that the heave damping ratio,  $\nu$  is 1.628 %, while the heave natural frequency is 3.23 rad/Sec in model scale. The time domain heave decay data collected from the experiment is shown in figure 2.

#### 5.1 Heave Motion Response

In this part, the heave response amplitude for GVA 4000 semi-submersible structure in head sea condition was discussed. The result from the proposed numerical result was also compared to the motion experiment result. Input for the numerical program was also adjusted to make the condition as close as the experimental condition. Since this paper is targeted to discuss the involving of viscous damping in calculation to correct the heave

motion predicted by the diffraction potential theory, thus the discussion will only made on the heave motion.

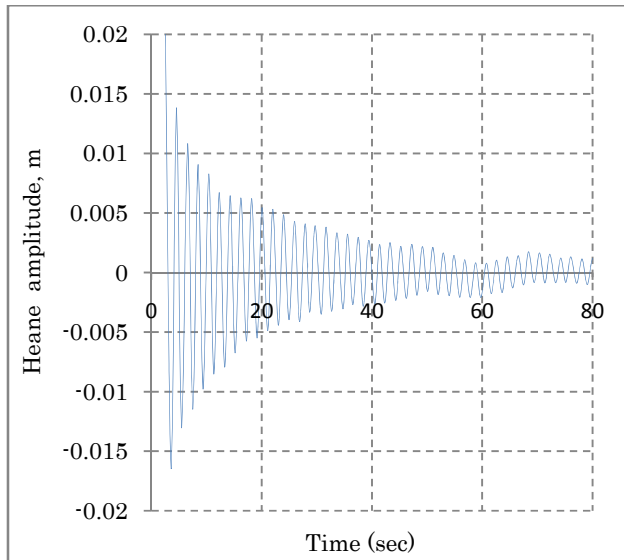


Figure 2: Heave amplitude for semi-submersible in the time domain for the heave decay experiment.

From the previous study, it can be obtained that the diffraction potential theory is weak in predicting the heave motion response when the wave frequency closes to the structure natural frequency. By detail study of the problem, it is obtained that the linear damping predicted by the diffraction potential theory is very small at this wave condition. This error was caused the theory to give the infinite response at the wave condition where it closer to semi-submersible natural frequency.

The figure 3 shown the non-dimensional heave damping calculated by diffraction potential theory, proposed viscous damping equation and the summation of both the heave damping. From the comparison, it is obtained that the heave damping calculated by diffraction potential theory increase rapidly when the wave length increase if the wavelength is below 1.5 meters. If the wavelength longer than 1.5 meters, it is obtained that the damping coefficient calculated by diffraction potential theory decrease significantly by increase the wavelength. The linear damping from diffraction potential theory finally reduced to nearly zero after wave length 5 meters. From the study, the region where the heave motion dominates by damping term is located at the location where the wave frequency is close to the structure natural frequency [21]. The heave natural frequency for this semi-submersible is located at wavelength around 9 meters. Due to the small prediction of the heave damping by diffraction potential theory, the motion response calculated in this region is becoming significant large and no agreed to the experiment result as shown in figure 4.

On the other hand, the heave viscous damping calculated by proposing equation is increasing gradually when the wave length increased. This additional heave viscous damping added into the motion equation will help to increase the damping coefficient and to avoid the large overshooting of the heave motion response

when wave frequency is close to semi-submersible's heaved natural frequency.

To obtain the total damping for semi-submersible heave motion, the magnitude of damping coefficient is assumed can be directly sum up for the damping calculated by both the methods. As shown in figure 3, total damping by sum-up the executed damping between the two methods will be influenced by the damping coefficient calculated by two of the methods for the wavelength below 5 meters. However, due to the damping calculated by diffraction potential theory for this semi-submersible is trending to become zero for wavelength longer than 5 meters, then the tendency of total damping is following the tendency of the viscous damping calculated by the proposed equation. At understood the heave motion dominated by damping term is located in the structure natural frequency region where this region is located at wavelength around 9 meters for this selected semi-submersible model. By referring to the figure 3, the damping coefficient obtained by summing up the damping calculated by both the methods given the magnitude around 0.275. This damping magnitude was helped to avoid the motion equation to divide by zero damping then trend the motion response to infinity. At this calculated magnitude, it can be summarized that the additional viscous damping by using proposed equation can be helped to correct the damping coefficient and then corrected the motion response estimated at the damping dominated region.

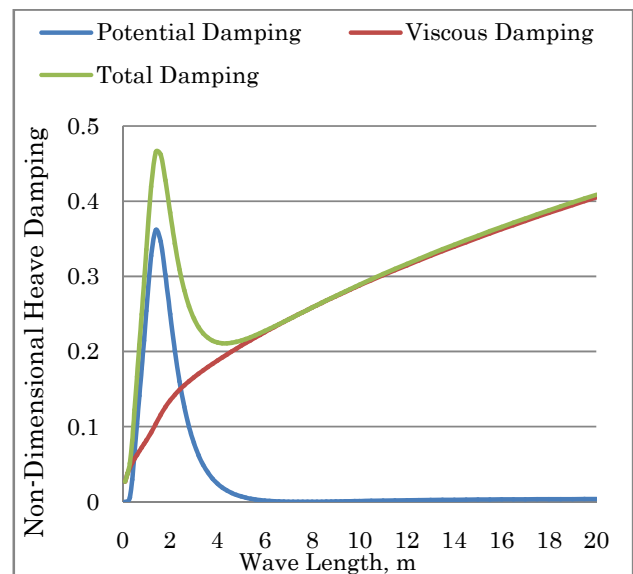


Figure 3: Non-dimensional Heave Damping for semi-submersible model

The heave RAO calculated by the diffraction potential theory and the corrected diffraction potential theory by viscous damping correction is presented in figure 4. The experimental data collected is only ranged from wavelength 1 meter to wavelength around 9 meters due to the limitation of the wave generating device in the laboratory. Comparison between the heave response calculated by diffraction potential theory with and without viscous damping correction is presented in the figure 4. From the figure, it can be obtained that the diffraction potential theory with



viscous damping correction was reduced the infinity heave response to the reasonable range compared to the result obtained by diffraction potential theory without viscous damping correction.

The tendency of the heave response calculated by the diffraction potential theory with and without viscous damping correction is similar between each other. However, due to the extra damping effect of the viscous damping correction, the heave response is no overshoot to infinity compare to results obtained from pure diffraction potential theory at wave frequency closed for the structure natural frequency (wave length equal to 9 meters). This observation also shown that a good prediction of viscous damping is significantly important to estimate the heave motion response for semi-submersible structure at damping dominates' region. Therefore, it can be summarized the neglected of the viscous effect on the estimate heave response of semi-submersible like the diffraction potential theory will lead to over prediction of heave response at the region where the motion is dominated by damping. The reason for this observation is also explained in the figure 3 where it can obtain that the damping coefficient under-predicted by the diffraction potential theory and it magnitude is almost zero at the wave condition.

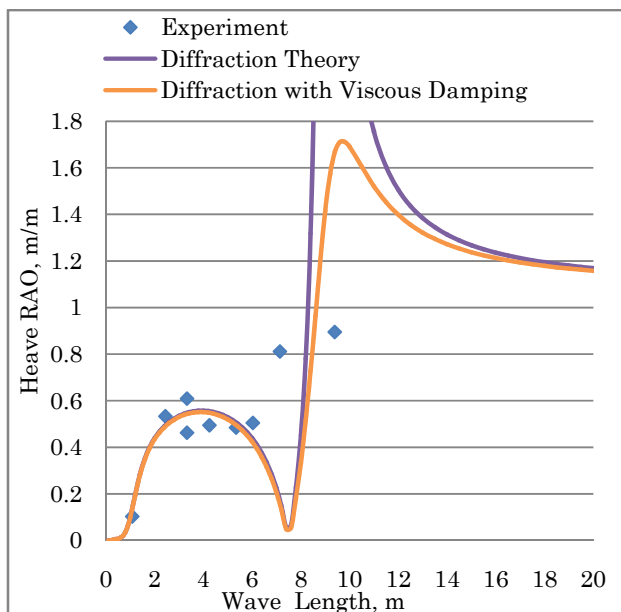


Figure 4: Heave motion response for semi-submersible model

## 5.0 Conclusion

In the conclusion, this paper was presented the viscous damping correction method to improve the tendency of heave response calculated by the diffraction potential theory. In general, the diffraction potential theory is a good method to predict the motion response of offshore structure especially the semi-submersible structure. In comparison to the experimental result, it is obtained that the pure diffraction potential theory is weak in predicting the heave response in the region where the heave motion is

dominated by damping or drag term. The weakness of the diffraction potential theory to neglect the viscous effect was caused the damping smaller and lead to wrong heave response tendency at the damping dominated region.

By involving the viscous damping calculation using the proposed equation, the small damping magnitude calculated from diffraction potential theory can be corrected. In this paper, the numerical results calculated by the proposed method shown that the overshooting problem observed at pure diffraction potential theory had improved. At the same time, accuracy of heave motion response in head sea condition calculated by the viscous damping correction method is still agreed to experiment result. Therefore, it can be concluded that the viscous damping correction is required to consider when the accuracy of the estimated heave motion of offshore floating structure such as semi-submersible is important.

## ACKNOWLEDGEMENTS

The authors would like to gratefully acknowledge to Marine Technology Center, Universiti Teknologi Malaysia for supporting this research.

## REFERENCE

- Hess, J. L., Smith, A. M. O., (1964). *Calculation of Nonlifting Potential Flow About Arbitrary 3D Bodies*, Journal of Ship Research.
- Van Oortmerssen, G., (1979). Hydrodynamic interaction between two structures of floating in waves, *Proc. of BOSS '79. Second International Conference on Behavior of Offshore Structures*, London.
- Loken, E., (1981). Hydrodynamic interaction between several floating bodies of arbitrary form in Waves, *Proc. of International Symposium on Hydrodynamics in Ocean Engineering*, NIT, Trondheim.
- Wu, S., Murray, J. J., Virk, G. S., (1997). *The motions and internal forces of a moored semi-submersible in regular waves*, Ocean Engineering, 24(7), 593-603.
- Yilmaz, A. Incecik, (1996). *Extreme motion response analysis of moored semi-submersibles*, Ocean Engineering, 23(6) 497-517.
- Söylemez, M., (1995). *Motion tests of a twin-hulled semi-submersible*, Ocean Engineering, 22(6) 643-660.
- Clauss, G. F., Schmittner, C., Stutz, K., (2002). Time-Domain Investigation of a Semi Submersible in Rogue Waves, *Proc. of the 21st International Conference on Offshore Mechanics and Arctic Engineering*, Oslo, Norway.
- Matos, V. L. F., Simos, A. N., Sphaier, S. H., (2011). *Second-order resonant heave, roll and pitch motions of a deep-draft semi-submersible: Theoretical and Experimental Results*, Ocean Engineering, 38(17-18) 2227-2243.
- Wackers, J. et al., (2011). *Free-Surface Viscous Flow Solution Methods for Ship Hydrodynamics*, Archive of Computational Methods in Engineering, Vol. 18 1-41.
- Afrizal, E., Mufti, F.M., Siow, C.L., Jaswar, (2013). Study of Fluid Flow Characteristic around Rounded-Shape FPSO Using RANS Method, *The 8<sup>th</sup> International Conference on*

- Numerical Analysis in Engineering*, pp: 46 – 56, Pekanbaru, Indonesia.
- 11 Jaswar et al, (2011). An integrated CFD simulation tool in naval architecture and offshore (NAO) engineering, *The 4<sup>th</sup> International Meeting of Advances in Thermofluids, Melaka, Malaysia, AIP Conf. Proc.* 1440, pp: 1175 - 1181.
  - 12 Abyn, H., Maimun, A., Jaswar, Islam, M. R., Magee, Bodagi, A., B.Pauzi, M., (2012). Model Test of Hydrodynamic Interactions of Floating Structures in Regular Waves, *Proc. of the 6<sup>th</sup> Asia-Pacific Workshop on Marine Hydrodynamics*, pp: 73 - 78, Malaysia.
  - 13 Abyn, H.,Maimun, A., Jaswar, Islam, M. R., Magee, A.,Bodagi, B., Pauzi, M., (2012). Effect of Mesh Number on Accuracy of Semi-Submersible Motion Prediction, *Proc. of the 6<sup>th</sup> Asia-Pacific Workshop on Marine Hydrodynamics*, pp: 582 - 587, Malaysia.
  - 14 Siow, C. L., Jaswar, Afrizal, E., Abyn, H., Maimun, A., Pauzi, M., (2013). Comparative of Hydrodynamic Effect between Double Bodies to Single Body in Tank, *The 8<sup>th</sup> International Conference on Numerical Analysis in Engineering*, pp: 64 – 73, Pekanbaru, Indonesia.
  - 15 Tiau, K.U., Jaswar, Hassan Abyn and Siow, C.L., (2012). Study On Mobile Floating Harbor Concept, *Proc. of the 6<sup>th</sup> Asia-Pacific Workshop on Marine Hydrodynamics*, pp: 224 - 228, Malaysia.
  - 16 Kvittum, M. I.,Bachynski, E.E.,Moan, T., (2012). Effect of Hydrodynamic Modeling in Fully Coupled Simulations of a Semi-Submersible Wind Turbine, *Energy Procedia*, 24.
  - 17 Siow, C. L., Abby Hassan, and Jaswar, (2013). Semi-Submersible's Response Prediction by Diffraction Potential Method, *The International Conference on Marine Safety and Environment*, pp: 21 - 28, Johor, Malaysia.
  - 18 Lu, L., et al. (2011). *Modelling of multi-bodies in close proximity under water waves—Fluid forces on floating bodies*. *Ocean Engineering*. 38(13): p. 1403-1416.
  - 19 Nallayarasu,S. and Siva Prasad, P., (2012). Hydrodynamic Response of Spar and Semi-submersible Interlinked by a Rigid Yoke - Part 1: *Regular Wave, Ship and Offshore Structures*, 7(3).
  - 20 Christina Sjöbris, (2012). Decommissioning of SPM buoy, *Master of Science Thesis*, Chalmers University of Technology, Gothenburg, Sweden.
  - 21 Journee, J.M.J and Massie, W.W. (2001). *Offshore Hydromechanics. (1<sup>st</sup> Edition.)*, Delf University of Technology.